

रम्य

एक पहाटेचं स्वप्न...

रम्या

एक पहाटेचं स्वप्न...

असं म्हणतात की,
पहाटेची स्वप्न खरी ठरतात.

पुण्यनगरीत आलिशान घरकुलाचं
तुमचं स्वप्न येथेच खरं होणार...

Ramnya, your **'dream come true'** home.

Ramnya is one of the luxurious livings with an exclusive location which strives to build your dream into reality. The home that gives you warmth & coziness, throughout the day.

Ramnya, a prestigious 3 BHK residential project by Nest Constructions, is a masterpiece with high class design and amenities.

How would you settle for anything less than your **'dream come true'** home...

रम्या

3 BHK Luxurious Living

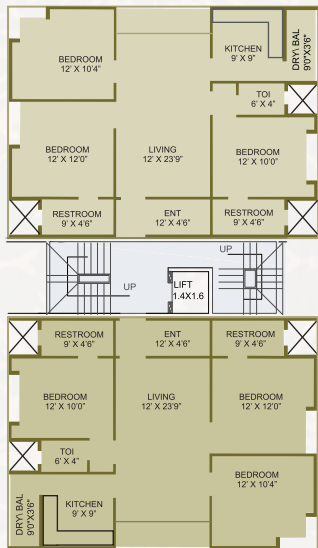






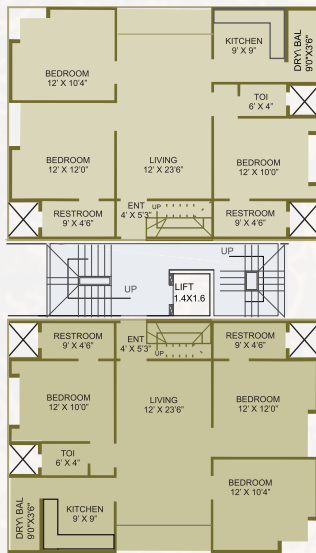
FIRST TO FOURTH FLOOR

FLAT NO.	CARPET	TOTAL
101 & 102	975 Sq. Ft.	1267 Sq. Ft.
201 & 202	975 Sq. Ft.	1267 Sq. Ft.
301 & 302	975 Sq. Ft.	1267 Sq. Ft.
401 & 402	975 Sq. Ft.	1267 Sq. Ft.



FIFTH FLOOR

FLAT NO.	CARPET	BASIC SALEABLE
501 & 502	1032 Sq. Ft.	1342 Sq. Ft.
TOP TERRACE BUILT UP	TOP TERRACE SALEABLE (1/3)	TOTAL SALEABLE
510 Sq. Ft.	170 Sq. Ft.	1512 Sq. Ft.
528 Sq. Ft.	176 Sq. Ft.	1518 Sq. Ft.



Amenities

- Appeasing Elevation and gracefully designed entrance lobbies.
- Rubber moulded paving blocks/ Tremix in driveway
- Underground and overhead water tanks and automatic water level controller.
- Automatic lift for 5/6 persons with power backup - OTIS/ KONE make
- Ups/ Generator backup for lifts , water pumps, light fittings in staircase and parking areas
- Main entrance door with video security system
- AC provision in all bedrooms
- Fire fighting system
- Vermiculture
- Anti-treatment to the foundation of the building
- Water proofing guarantee of 3 years
- Dado tiles in kitchen and bedroom up to ceiling
- Solar water heating system
- CCTV cameras at parking level
- Sensor system for parking level lights

Specifications:

- **R.C.C.**
 - Earthquake resistant framed structure conforming to ISS codes
- **Brickwork**
 - External Walls - 6" thick clay bricks / fly-ash blocks
 - Internal Walls - 4" thick clay bricks / fly -ash blocks
- **Plaster**
 - External Walls -Double coat with water proofing
 - compound using Reliance Fibers
 - Internal Walls and ceiling - POP finish
- **Flooring & Tiling**
 - Light coloured, double charged vitrified tiles in all rooms - Kajaria / Johnson / Nitco make
 - 600 x 600 mm tiles in hall, kitchen, dining and all bedrooms
 - Anti-skid ceramic flooring in toilets and terraces



- **Doors**
 - 1. Engineered door frames with both-sides laminated shutters for bedrooms
 - 2. Granites window sill
 - 3. Granite /marble frames for toilet
- **Windows**
 - 1. Powder-coated sliding windows with mosquito net
 - 2. Mild steel safety grills for all windows
- **Kitchen**
 - Granite top kitchen platform with branded stainless steel sink
 - Glazed / ceramic tiles dado up to lintel height
 - Jaquar / equivalent C. P. fittings
 - Provision for water purifier
 - Provision for exhaust fan
- **Washrooms**
 - Jaquar / equivalent C. P. fittings
 - Dado tiles up to full height
 - Concealed CPVG / G.I. pipes plumbing with hot and cold water arrangements
 - Provision for exhaust fan
 - Hindware / Parryware sanitary ware in all bathrooms
- **Electrification**
 - Branded MCB and ELCB (Earth Leakage circuit Breaker) for the apartment
 - Adequate points with branded modular switches of Anchor / Roma / Legrand make and copper wiring with polycab / finolex make
 - TV and telephone points in living room and master bedroom
 - 15 Amps power points for washing machine, microwave, air conditioner, refrigerator and water heater
 - Two-way light and fan switches in all bedrooms

शम्य

एक पहलटिचं एवम्ब...





Presents Luxurious Living Project...



Credits:

Architect: Ar. Ramesh Hulgeri & Ar. Arun Joshi

RCC Consultant: En. Vikas Waghmare

Legal Advisor: Adv. Dilip Athavale

Creative Design: Deep Blue Designs P. Ltd.



Site Address:

"Rammya", Sr. No. 38/2, Near Tathawade Udyan, Karvenagar, Pune 411 052.

📞 97637 20011 | 📠 97640 42265 📧 thenestconstructions@gmail.com

www.nestconstructions.in

Note: Details & Photographs in this brochure are only indicative. While every care is taken to give information as precisely as possible the developers reserve all & absolute right to alter, amend or withdraw any part of the plan, dimensions, elevations, color scheme facilities/amenities without any notice. Contents of this brochure shall not constitute part of the Contract Agreement.



MRA